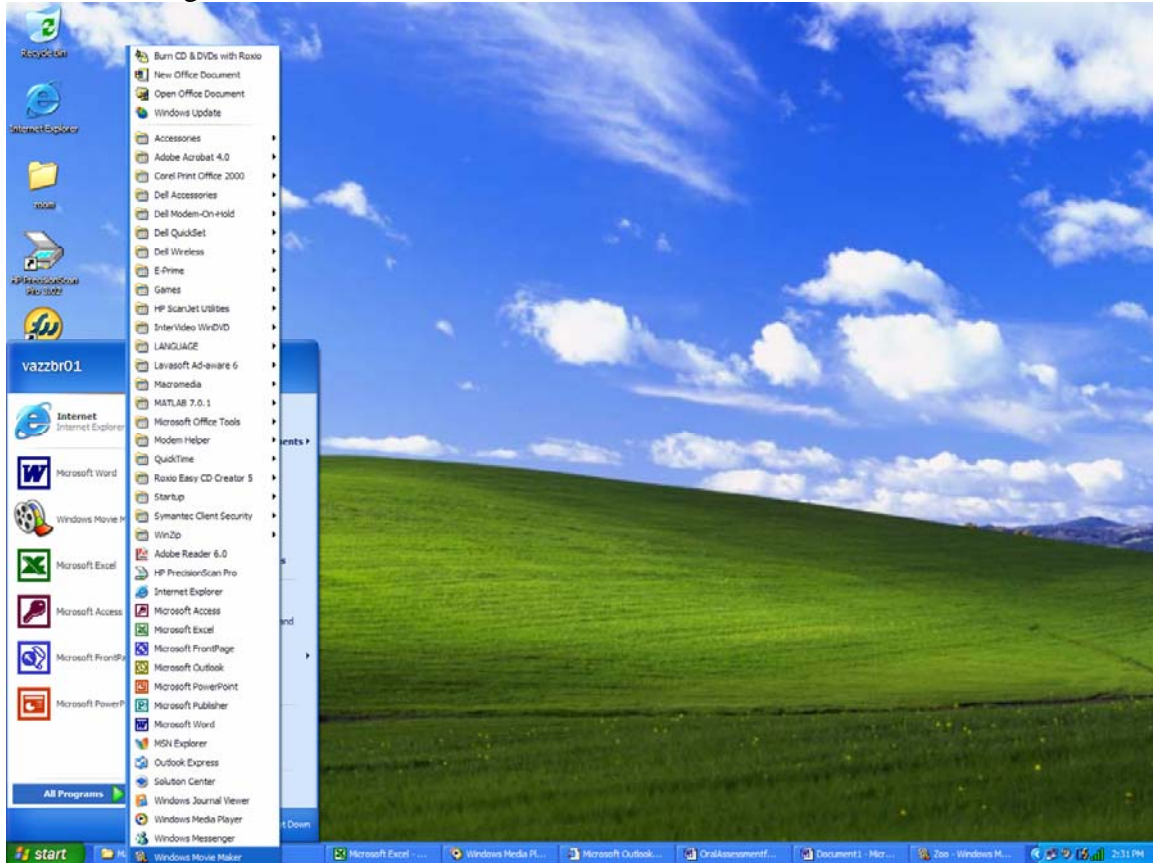
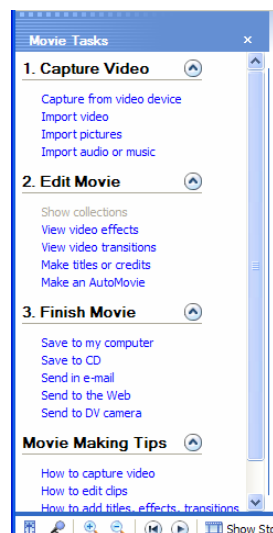


Creating a Dubbed Movie with *Windows Movie Maker*

To access *Windows Movie Maker*, go to the “Start” menu at the bottom of the screen and click “All Programs.” Then click “Windows Movie Maker”



Choose your video by clicking “Import video” under the menu, “1. Capture Video.” You can upload your movie from your H: drive, a CD, or from a file saved on your computer.








When you have uploaded your video, your next step is dubbing over the sound. You need a microphone or a computer that has one in its speaker system. Dubbing over a clip can be achieved in two ways:

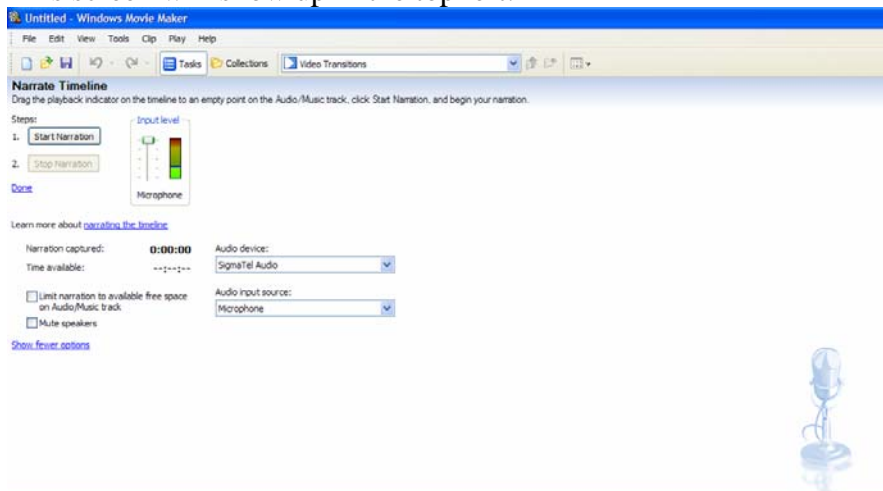
1. All of the speakers have to be in the same room at the same time and speak along with the video recording. A Y-cable can be used to connect two microphones or headphones together so that two people can hear and record at the same time.
2. Each speaker can record his or her voice track, save it, and then import the file to another computer where all the recorded files are combined to make one track.

The second option allows each classmate to work on the project individually and does not require a meeting outside of class time.

The simplest way to record is to have your dialogue written down and to have everyone present, using the same computer and microphone. It is efficient and easy.

The actual recording process is simple, click the little Microphone picture at the bottom-left of the screen      Show Storyboard

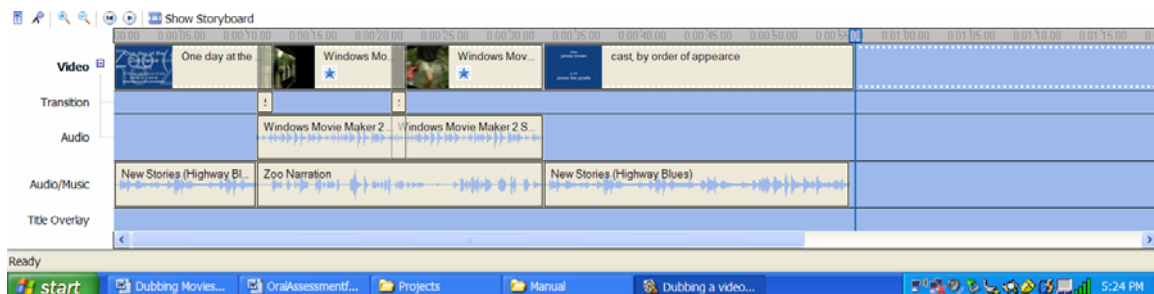
This screen will show up in the top left:



If you do not want the original sound to be in your dubbed recording, click the “mute speakers” check box. Next, begin dubbing by clicking the “Start Navigation” button in the top left and click the “Stop Navigation” to stop recording.

~ After you have recorded a sound clip you will need to save it.

The video will appear in the top section and the recorded audio will be below it. *You can change the timing of the clip by clicking and dragging both the video and the audio from side to side so that they match up the way you want.* This may require some experimentation.



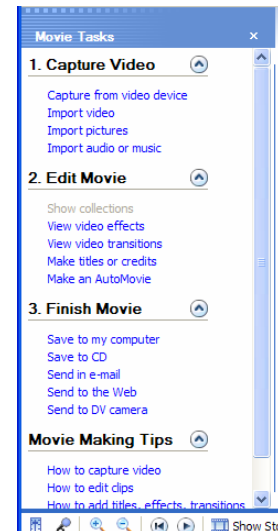
To merge multiple sound tracks so that they play at the same time, simply drag one track on top of another. Two tracks cannot be placed exactly on top

of each other but if you allow a little time of blank recording at the beginning of your audio recording, you can fix it so that they all fit correctly.

You can add a beginning title and credits to your movie by clicking “Make titles or credits”

Also, you can add video affects such as black and white or slow motion and you can make it look like it was filmed a long time ago. Just click “View video effects” and experiment with what effect you want to use. To apply an effect to your video, right click the effect and select “Add to Timeline” or simply drag it to the desired slide.

Between scenes, you can add a transition effect that allows you to more smoothly shift into the next scene. For this, click on “View video transitions.”



Have fun, be creative, and experiment on using each of these features, they can make your dubbed video a lot more interesting to watch for both the teacher and the student.

When you are finished, save your video to a CD, your H: drive, or your computer’s memory. When saving in this way, it saves in a file that can only be worked on using *Microsoft Movie Maker*.

To save your finished video so that you can view on as a video on a media player, click the “**Save to My Computer**” link under the subtitle **3. Finish Movie**. Then save it to where you want.

*******Important Note*******

All of the files that you use in your video *must* be saved in the same location in order for your video to play using other computers. This includes all of your audio files, all of the pictures that you use, and all of your videos. If all of the files are not saved to the same location, your video will have blank spaces where pictures should be or your video will play without the audio. Saving it to the same location means saving all the files either to your H: drive, to your computer, or to a memory stick. You can save it to multiple locations just make sure all of the files in your video are saved to each location.

If you do not have a digital or video camera, you can borrow one from the LRC or IT.