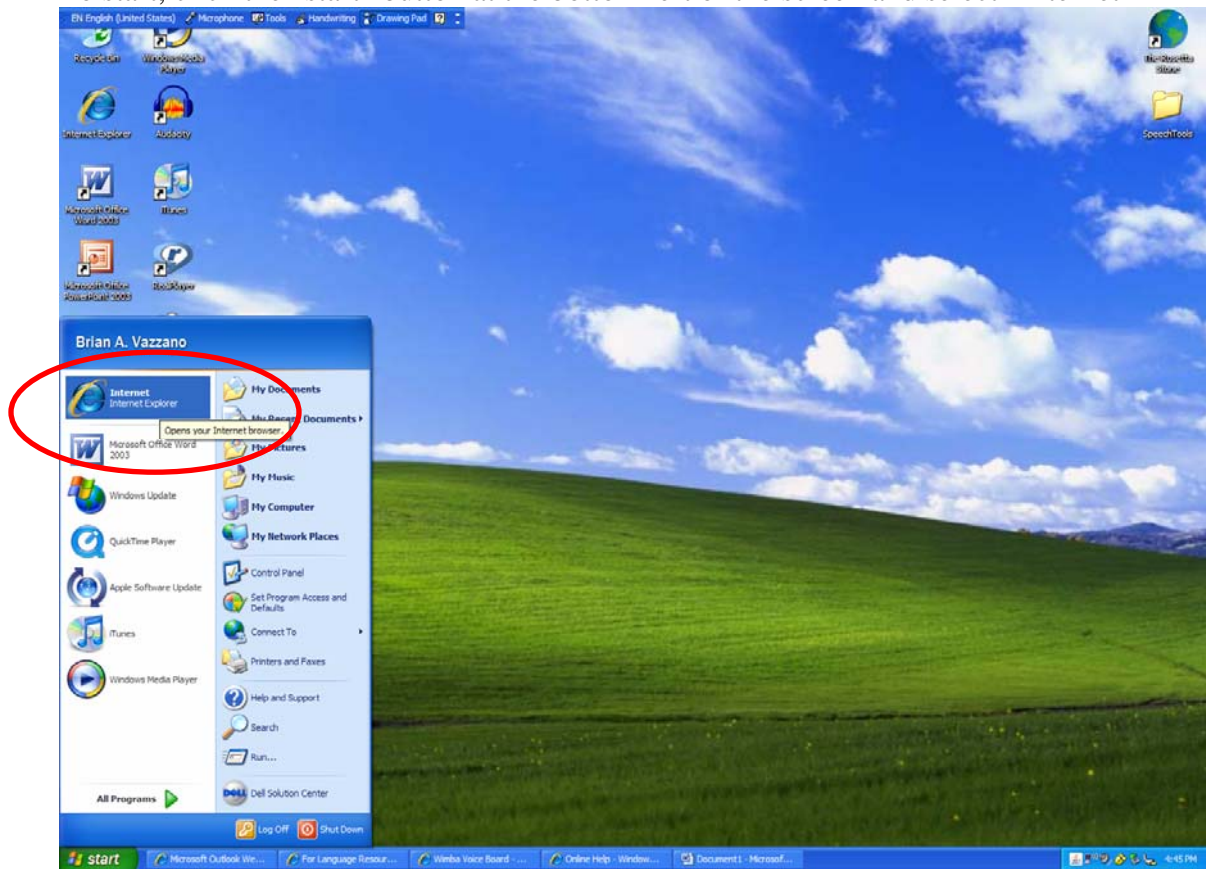


Wimba

To access Wimba, first you need to log on to Angel and choose your course. To start, click the “start” button at the bottom left of the screen and select “Internet”



Then go to the “Current Students” page, found on the left tab.



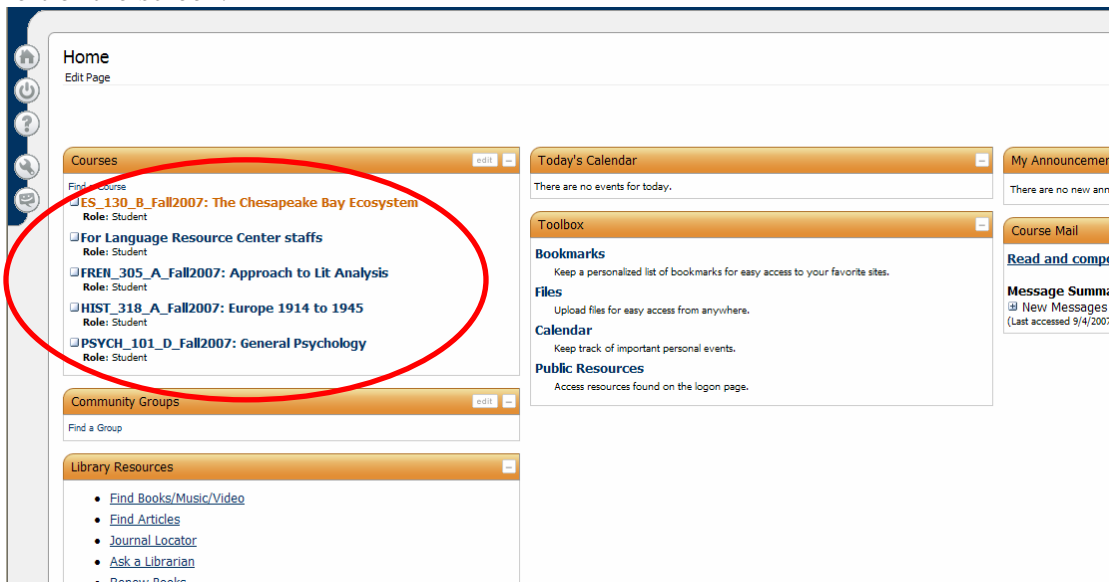
Then, click the “Angel” button on the left tab. This will launch Angel.



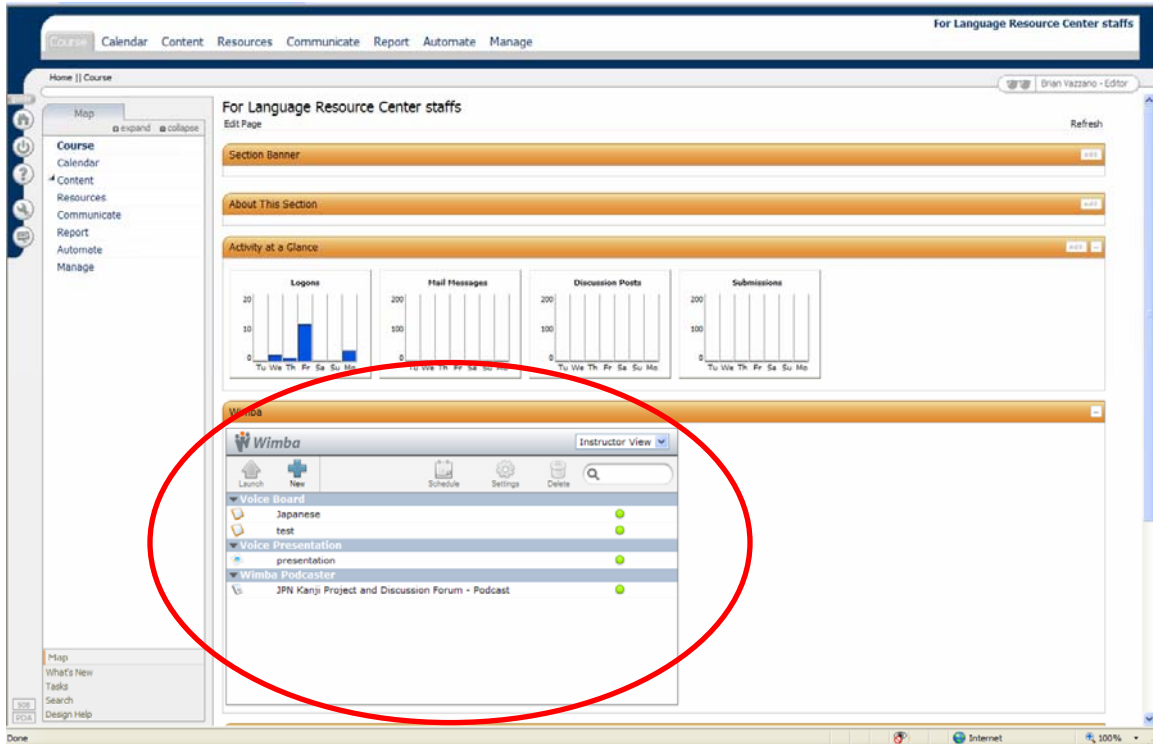
You will now need to input your username and password on the top left two spaces.



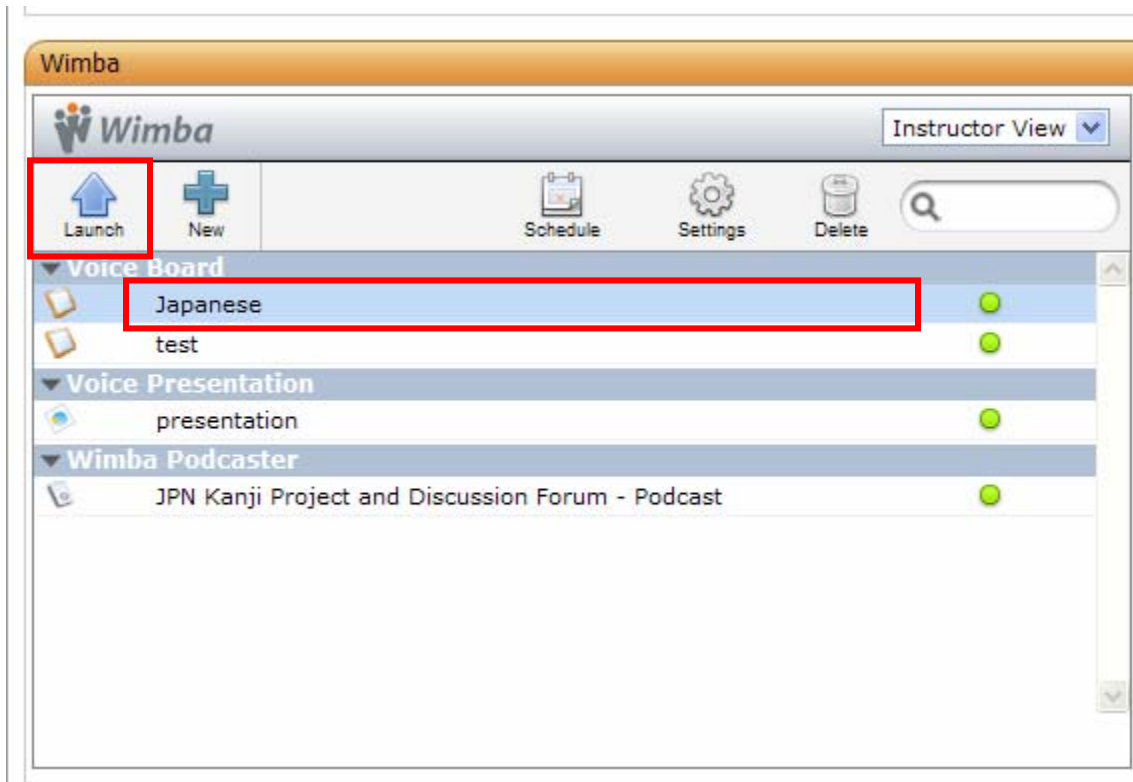
After logging on, you will see the welcome screen. To use wimba, you need to choose the course that you are accessing wimba for. You should see a list of courses on the top-left of the screen.



When you click on your course, the wimba components should appear on the bottom of the screen.

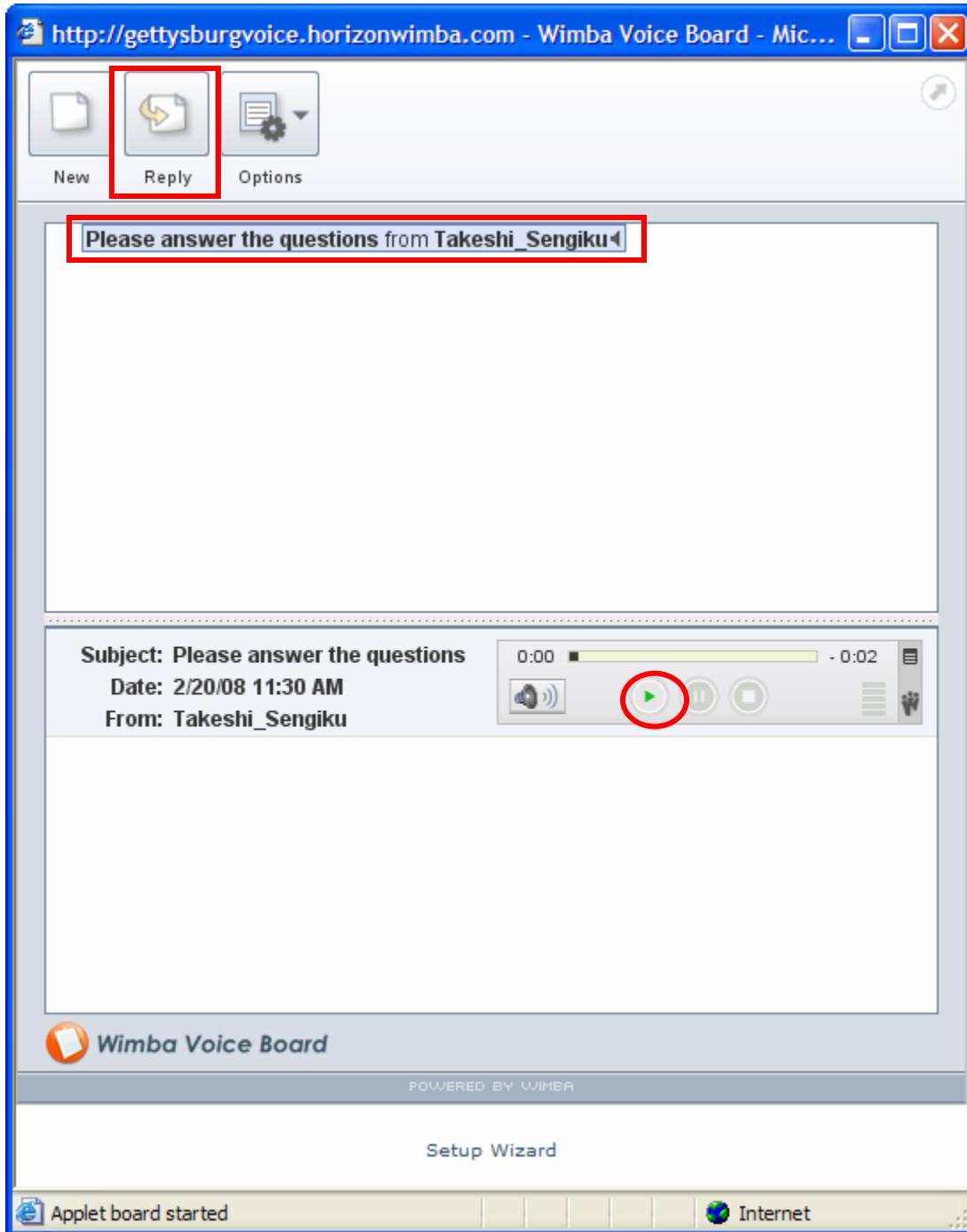


Then, you will highlight a specific voiceboard and click 'Lunch'



The pop-up window for voiceboard will appear.

To listen the audio, you will highlight a thread and click play button on the bottom of the window. Once you are ready for answering the question, click REPLY button on the top.

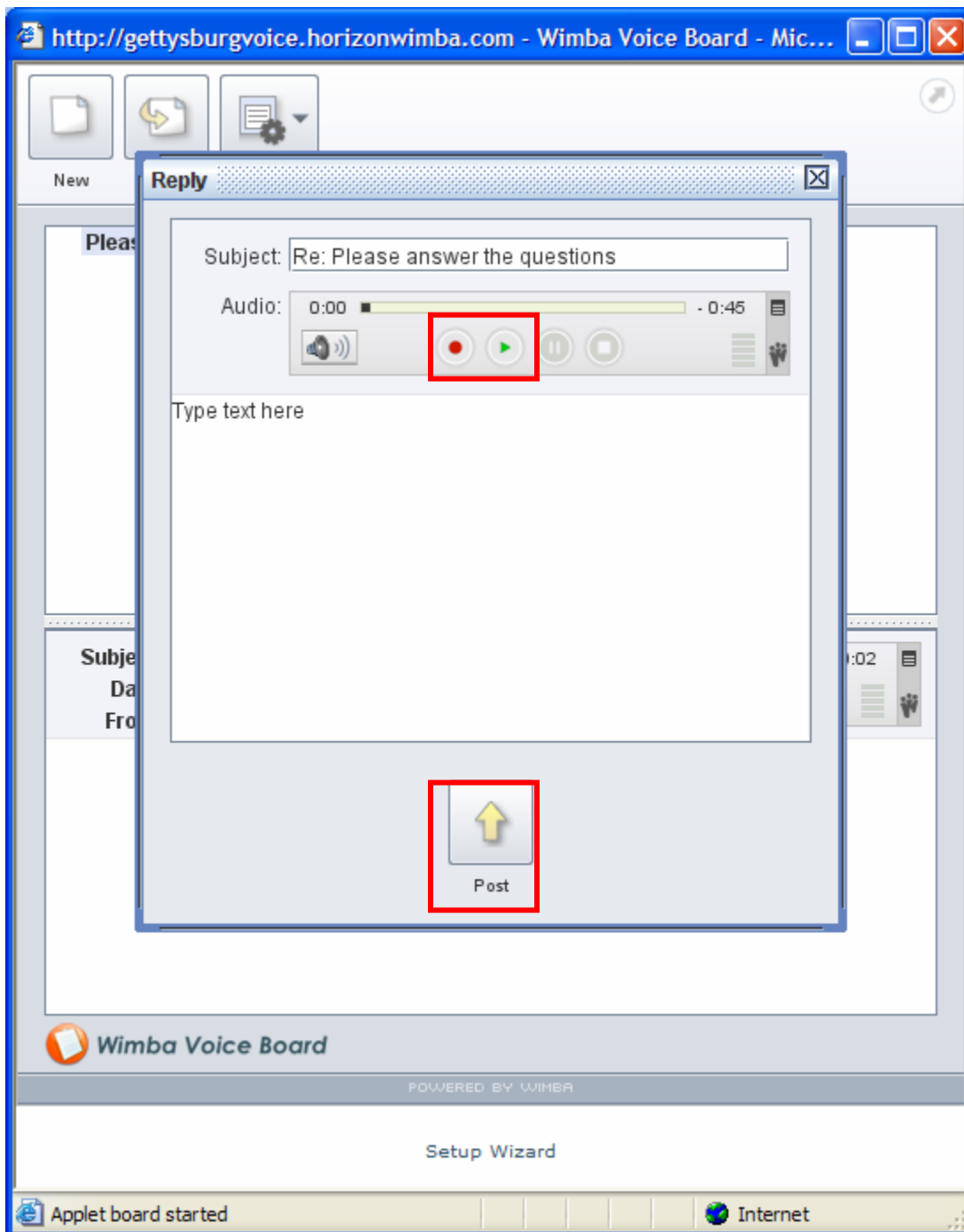


Recording window will appear.

You will hit Record button (red light button) to record your audio. You may also type the text in the textfield.

Once you finish your recording, you will click 'Post' to submit the answer to the voiceboard.

*Make sure you will listen your own audio before you submit!!!



Once you submit your audio, you should see your own thread in the voiceboard.

