

Can't play the AVI file in the Windows Movie Maker How to convert AVI file to WMV file for Windows Movie Maker

Manual for Prism Video Converter (The application is installed in the computers in the back rooms.)

***This issue usually appears when you shoot the film with “RCA Small Wonder EZ-201” and try to import the AVI file into Windows Movie Maker.



*****Before** you use the application

- Move the AVI files into your personal H-drive.
- Create a new folder for keeping the converted WMV file.

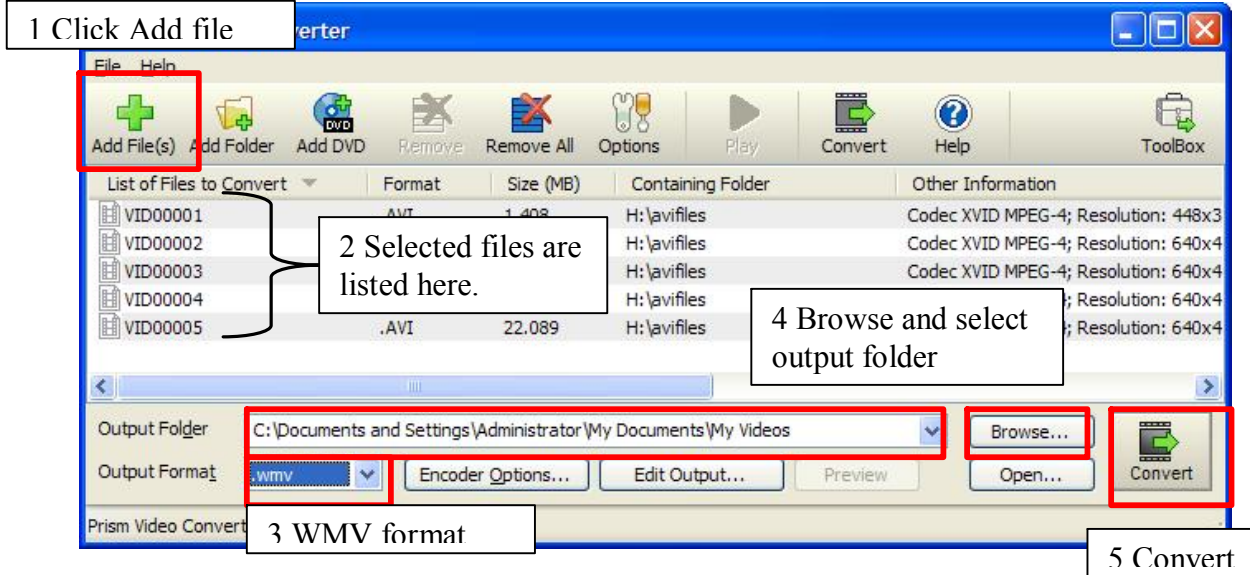
How to convert AVI to WMV file with ‘Prism Video Converter’

The application is located in the folder called ‘Video Application’ on the Desktop.



***When you double-click the icon, there may be the message for upgrade. Please click ‘NO’.

When you double-click, the application window will appear.



1. Click 'Add File(s)' and select the AVI files you would like to convert.
2. Once you select the files, they will be listed in the main windows.
3. Make sure you select 'WMV' as output format.
4. Click 'Browse' to select the folder you would like to have the converted files.
5. Click 'Convert'

The application will begin converting the files.

