

PERCUSSION

Spring 2024

Wind Symphony, Symphony Orchestra & Jazz Ensemble Audition Materials

Gettysburg
COLLEGE

Sunderman Conservatory
of Music

Auditionees should prepare excerpts from this file **and** major scales. If you are able to play minor scales, please inform the panel at the beginning of your audition. All string musicians should also expect a short sight-reading excerpt.

- Preparation of Excerpts:
 - Some instruments may have excerpts listed for specific groups (i.e. Majors, Majors/Minors only, or non-majors/minors only). Please refer to those instructions and prepare the excerpts meant for you.
 - In cases where there are only two excerpts, prepare both.
 - In cases where multiple excerpts are given, choose two *unless instructed otherwise in the contents of the file*.
 - Try to choose contrasting excerpts.
- Some instruments have jazz excerpts, including saxophone, trumpet, and trombone.
 - If you are auditioning for Jazz Ensemble as well as Wind Symphony or Symphony Orchestra, be sure to prepare the jazz portion of your audition materials as well.
 - Auditions for the rhythm section (piano, bass, drums, guitar) will take place at the first meeting of the semester once the winds have been seated.

Special Instructions for Percussionists:

- Majors: prepare all 3 excerpts
- Minors: prepare 2 of the 3 excerpts
- Non-Majors/Minors/Majors & minors on a secondary: prepare 1 of the 3 excerpts

24

Capriccio Espiritoso

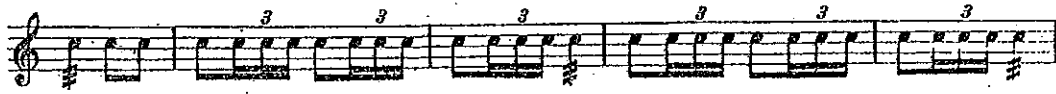
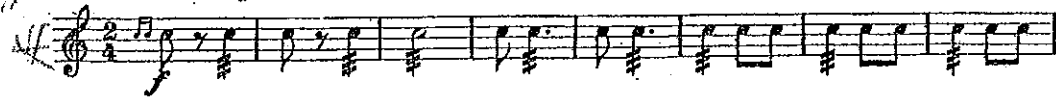
III. Alborada.

Lowrey-Kuus-Kuus

Vivo e strepitoso.

Bass

Snare



Cuana Platti.

attaca

TIMPANI

Beethoven: Symphony No. 9 (first movement: 18 measures before S – end)

The image shows a musical score for the Timpani part of Beethoven's Symphony No. 9, first movement. The score is written in bass clef and consists of five staves of music. The first staff is a short fragment starting with a *p* dynamic. The second staff, starting at measure 517, includes a *cresc.* marking. The third staff, starting at measure 525, features *f* and *piu f* dynamics. The fourth staff, starting at measure 531, is marked with a boxed 'S' and includes *ff*, *sempre ff*, and *tr* markings. The fifth staff, starting at measure 540, includes *sf*, *tr*, and *ff* markings. The music is characterized by rhythmic patterns of eighth and sixteenth notes, often in a triplet or dotted rhythm.

Audition Excerpts - Xylophone

Kabalevsky - Colas Breugnon Overture

30 31 6 32 6 33 34 *Presto*

allarg. a tempo

35 *mf*

37 *XILOFONO* 3

38 39

40

41 42 7 43 7 44 2

sf