

Survey Highlights

Fall 2016 Five-Year-Out Alumni Survey (Class of 2011)

Class of 2011

5 years after graduation

99%

Are employed (89%) or attending graduate/professional school (10%)

50%

Completed or enroll in a graduate/professional degree program

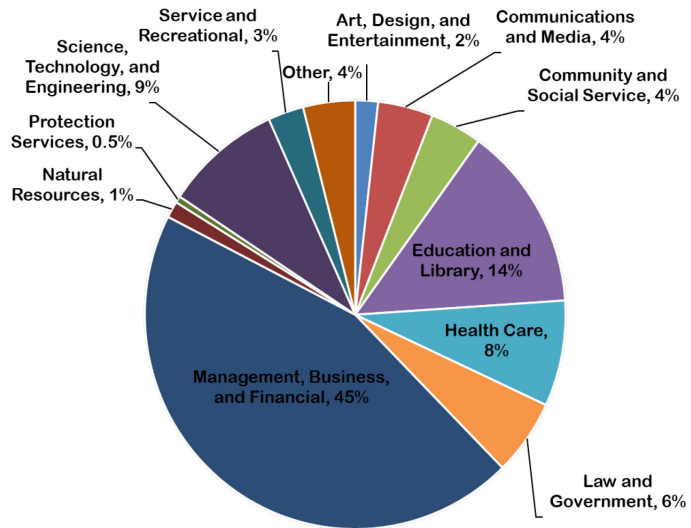
92%

Feel satisfied or very satisfied with their Gettysburg Education.

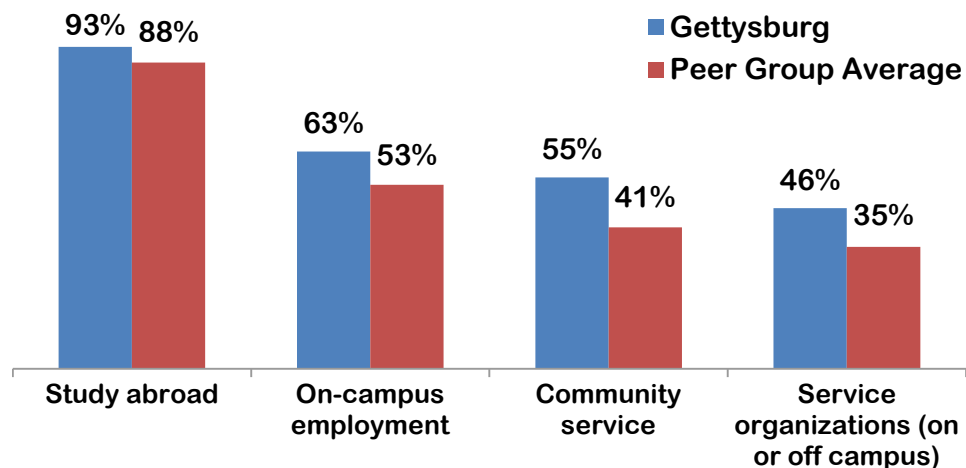
91%

Feel a very strong or some connection to Gettysburg

Four most common career fields of Gettysburg alumni: management, business & financial; education and library; science, technology & engineering; and health care.



Compared with alumni in the peer group*, Gettysburg alumni reported higher impact of participation in study abroad, on-campus employment, community service, and service organizations on their learning and personal development.

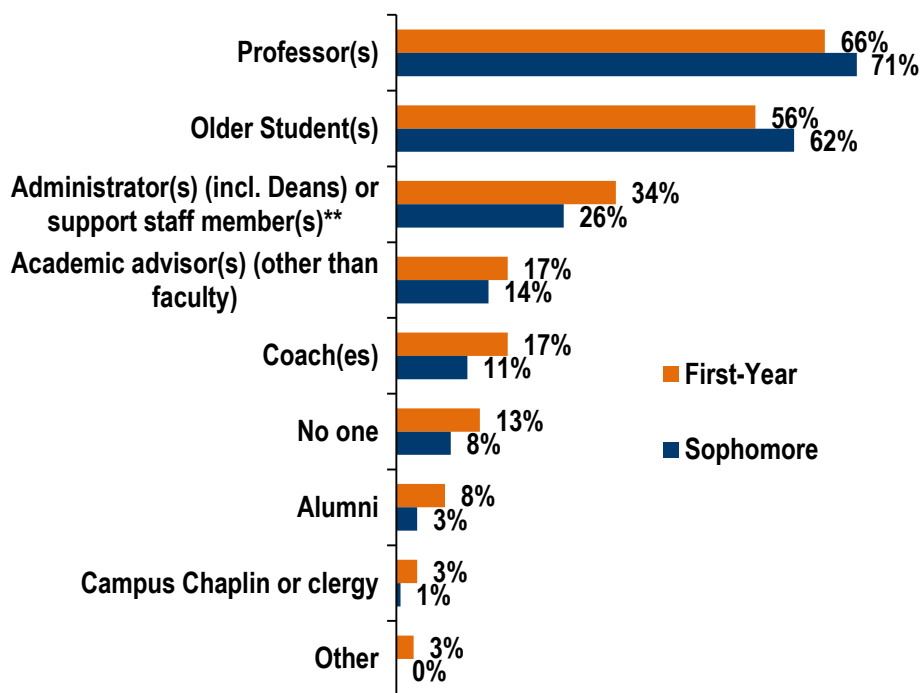


*Peer Group includes Harvey Mudd, Whittier, Kalamazoo, and Hampden-Sydney
 Survey Question: *To what extent did your experience with each of the following as an undergraduate at this institution contribute to your learning and personal development?* Rating Scale: Very little (1)—Some (2)—Quite a bit (3)—Very much (4). Displayed here is the combined % of those reporting "Quite a bit" and "Very much".

Note: Gettysburg response rate: 26% (placement information is based on the combined sample of Gettysburg survey responses and LinkedIn search, with a 83% knowledge rate); Peer Group response rate: 17%.

Survey Highlights

Spring 2017 First-Year Student and Sophomore Mentoring Survey



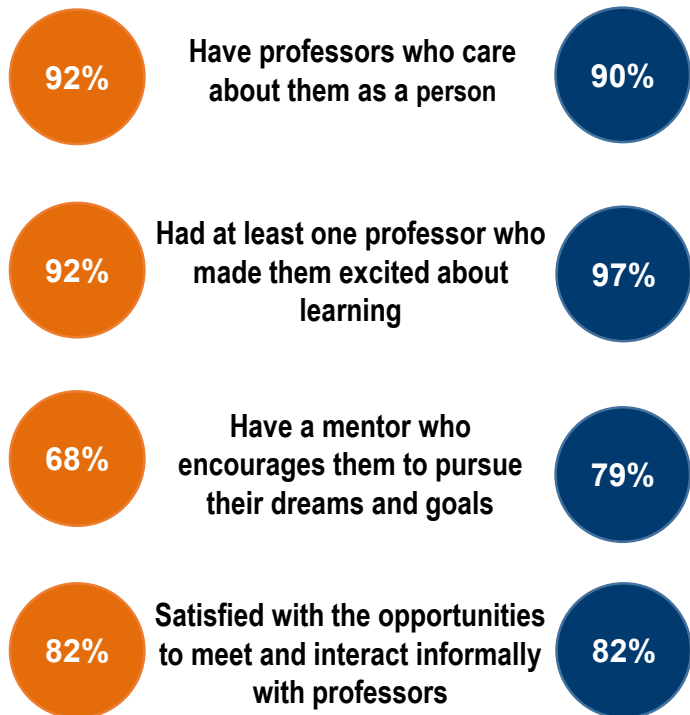
About two weeks into their second semester, 87% of first-year respondents have had a mentor(s) since starting at the College.

About two weeks into their fourth semester, 92% of sophomore respondents have had a mentor(s) since starting at the College.

Interactions with Professors and Others on Campus

First-Years

Sophomores



Percent having done or being involved in Experiential Learning Opportunities

